

29-04-2020

Dr. Rajesh Verma, Assistant professor  
Classification and head, D.K. College, Dumraon  
B.Sc. Zoology (Hons) part I, Paper I (A) Zoology.

Question: Arthropods key classification ka  
chitra sketch karke dikhay.

Arthropods are classified into five  
Sub phylum and each then subdivide  
into classes (a total of 16 classes according  
to recent classification of animal taxa).

Phylum Arthropoda:

I. Sub-phylum: Trilobitomorpha

(Extinct arthropods)

Class I: Trilobida

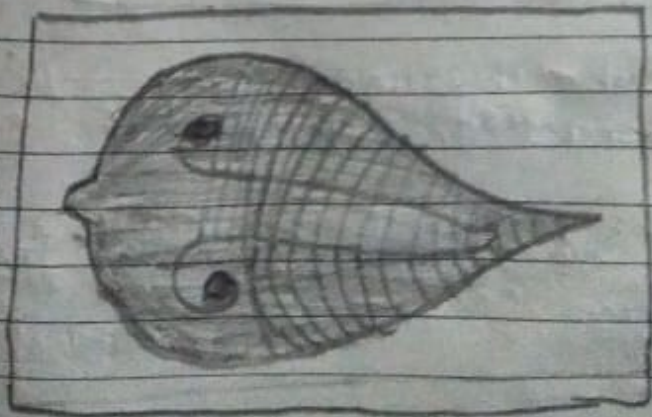


- Class 1 : Branchiopoda
- Class 2 : Remipedia
- Class 3 : Cephalocorida
- Class 4 : Maxillopoda
- Class 5 : Ostracoda
- Class 6 : Malacostraca

⇒ Sub-Phylum: Hexapoda (Insects)

- Class 1: Insecta
- Class 2: Entognatha

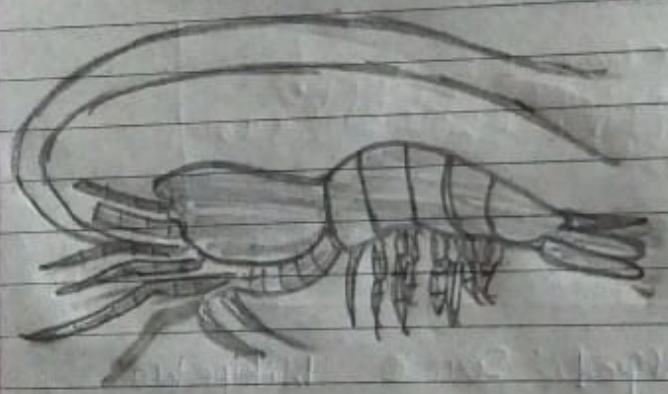
Identifying Characters of Sub-phyla of Arthropoda :-



Trilobite. (Source: wikipedia)

- Includes centipeds and millipedes
- All are terrestrial arthropods
- Usually contain many legs.
- Single pair of antennae
- Eyes simple

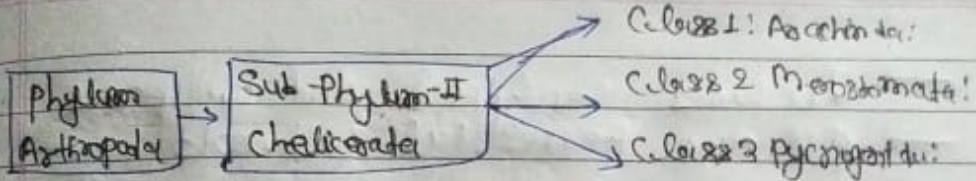
iv) Sub-phylum: Crustacea, General characters:



Carapace of Penaeus (red) Wikipedia

- Usually marine aquatic arthropods
- Head and thorax fused to form Cephalothorax
- Cephalothorax usually covered by single large Carapace

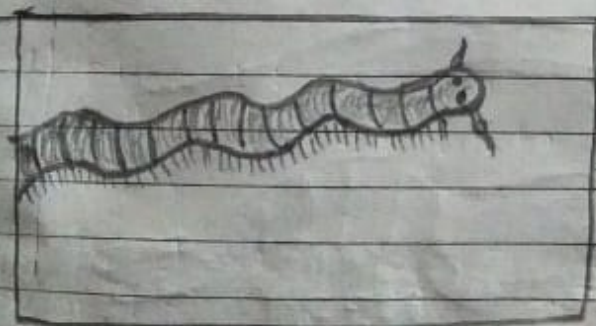




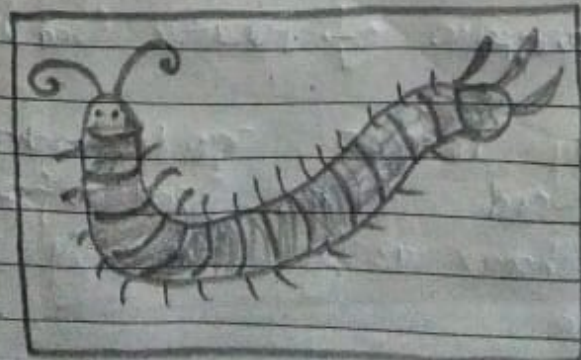
Sub-Phylum Chelicerata and its classes.

### II Sub-Phylum: Myriapoda

General characters:-



Millipede: Source Wikipedia

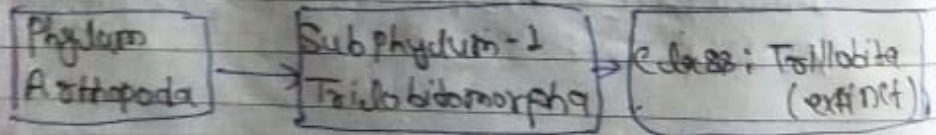


Centipede (Source Wikipedia)

### I Sub-Phylum: Trilobitomorpha:-

General characters:-

- primitive arthropods
- Extinct forms
- Abundant during paleozoic era.
- Body is divided into three lobes, hence the name trilobitomorpha.
- Body is divided into a median and two lateral lobes by a longitudinal axial furrow.



### II Sub-Phylum: Chelicerata (General Characters)

Sub-Phylum Chelicerata Includes three Class:-



II Sub-phylum: Myriapoda Chelicerata  
(Centipede, millipede) (spiders, harvest  
crab, scorpion)

- Class 1: Chilopoda Arachnida
- Class 2: Diplopoda Mesostigmata
- Class 3: Pansopoda Pyemozoida
- Class 4: Symphyla

III Sub-phylum: Myriapoda  
(Centipede, millipede)

- Class 1: Chilopoda
- Class 2: Diplopoda
- Class 3: Pansopoda
- Class 4: Symphyla

IV Sub-phylum: Crustacea  
(Crabs, prawns, shrimp)