

ॐ नमो भगवते वासुदेवाय

VEER KUNWAR SINGH UNIVERSITY - ARA

B.Sc.

ZOOLOGY (HONOURS) -

PART - III

PAPER - VI

FROM

DR. RAJESH VERMA
ASSISTANT PROFESSOR

AND

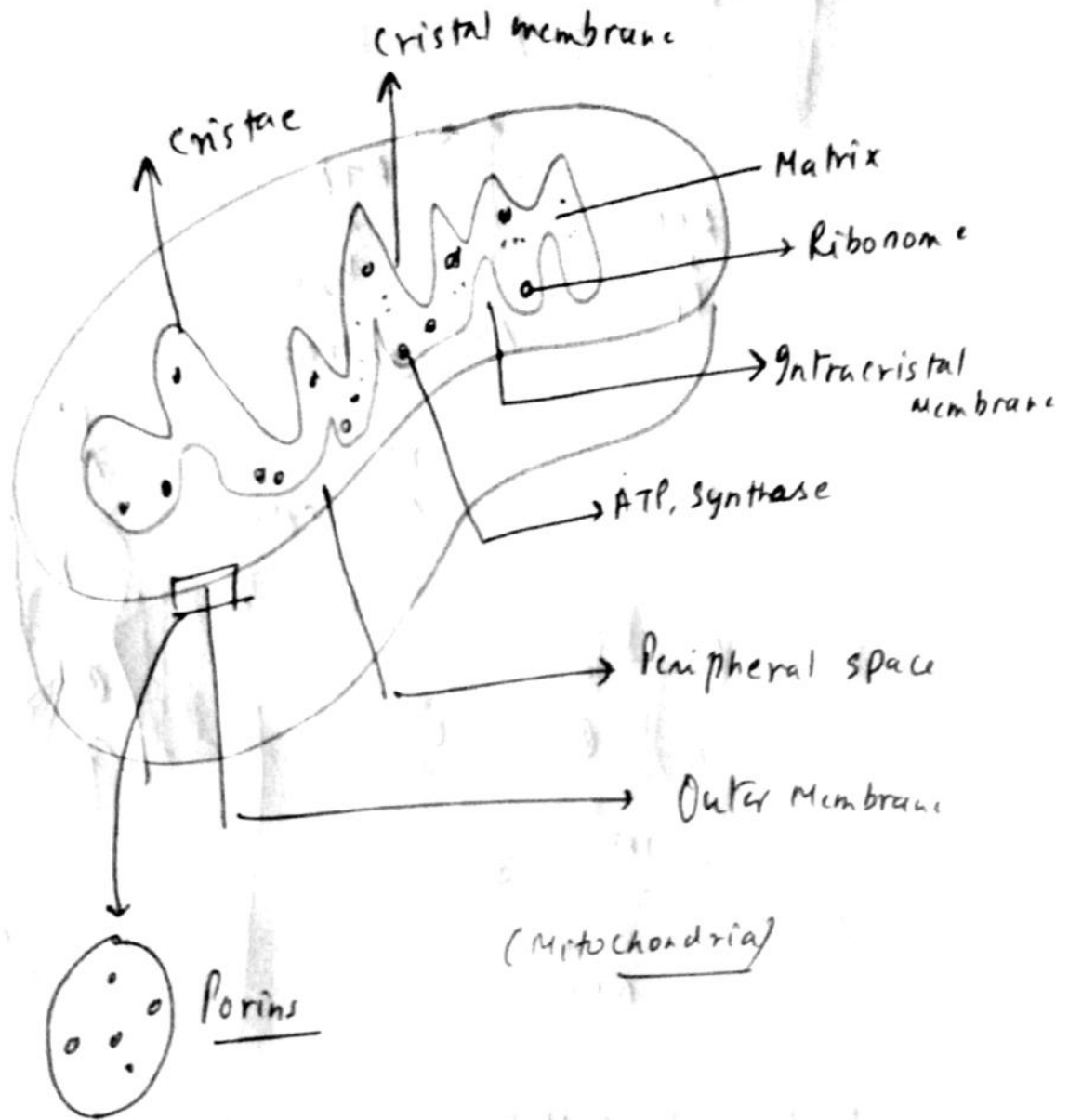
HEAD - U.G. DEPARTMENT OF ZOOLOGY

D. K. COLLEGE - DUMRAON (BUXAR)

Mobile - NO: 094305-10473

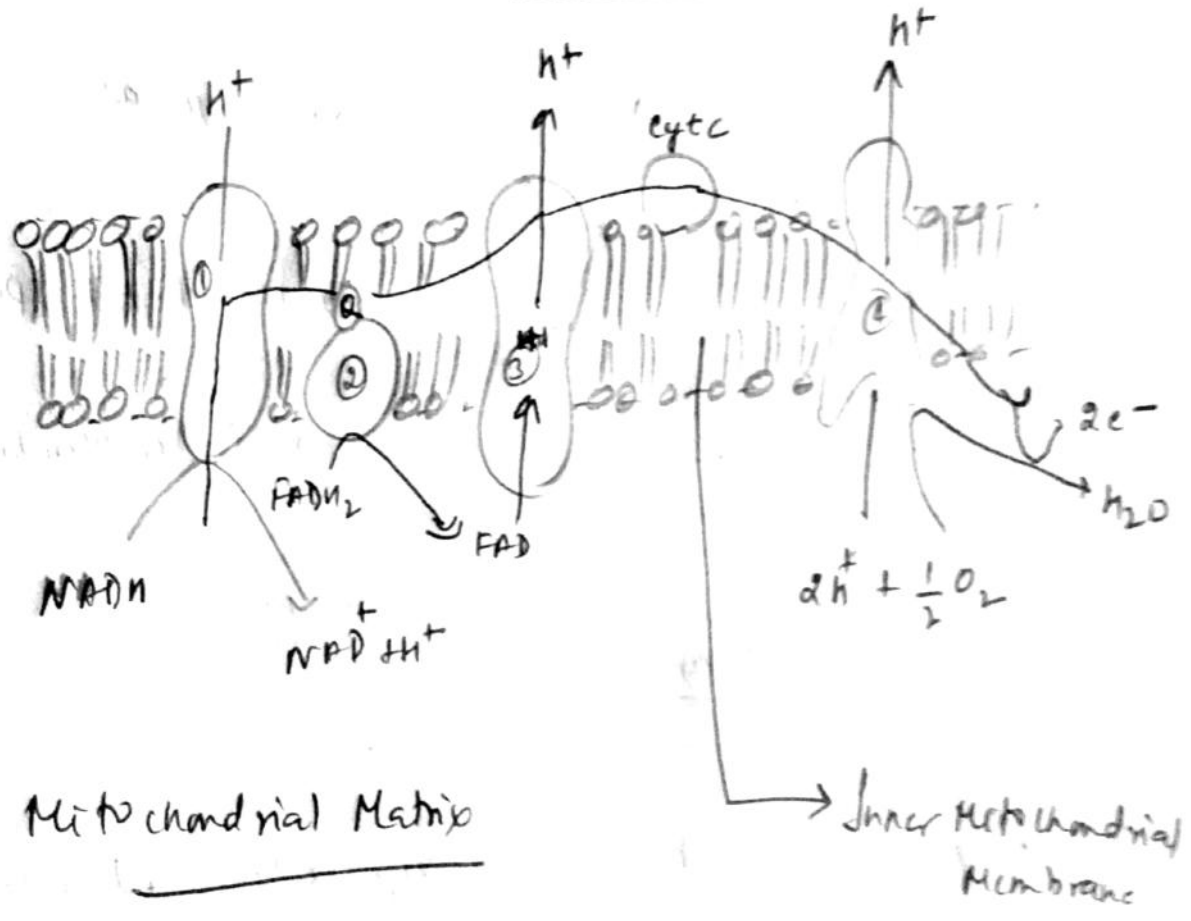
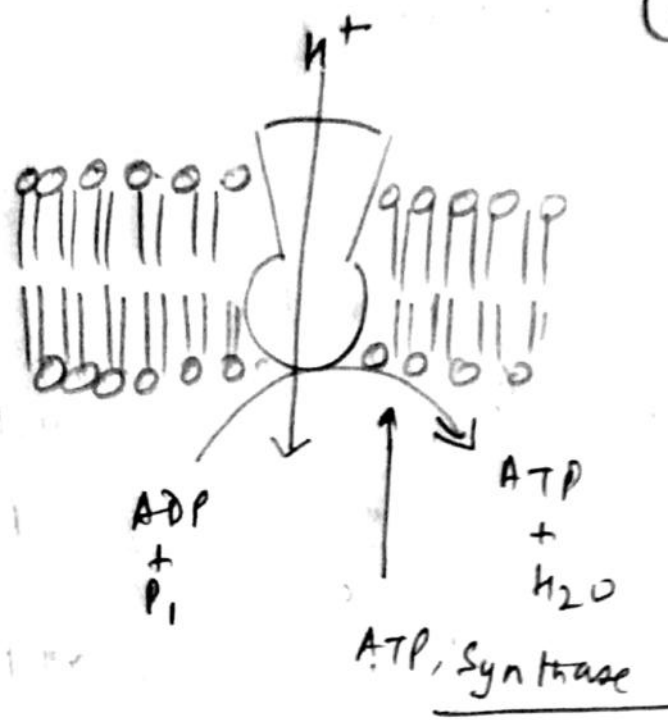
e mail = dr rajesh verma 2020@gmail.com.

10.5.2020



- o Membrane-bound cell organelles - , double membrane
- o Generate - chemical energy - needed to power the cell's biochemical rxn.
- o Produce chemical energy stored in - ATP

(2)



ETS

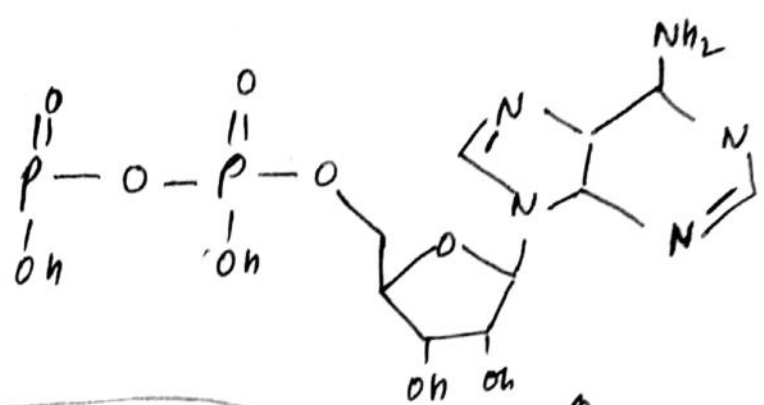
ETS - 2nd - last component of aerobic respiration

Only part of glucose metabolism that uses atmospheric oxygen.

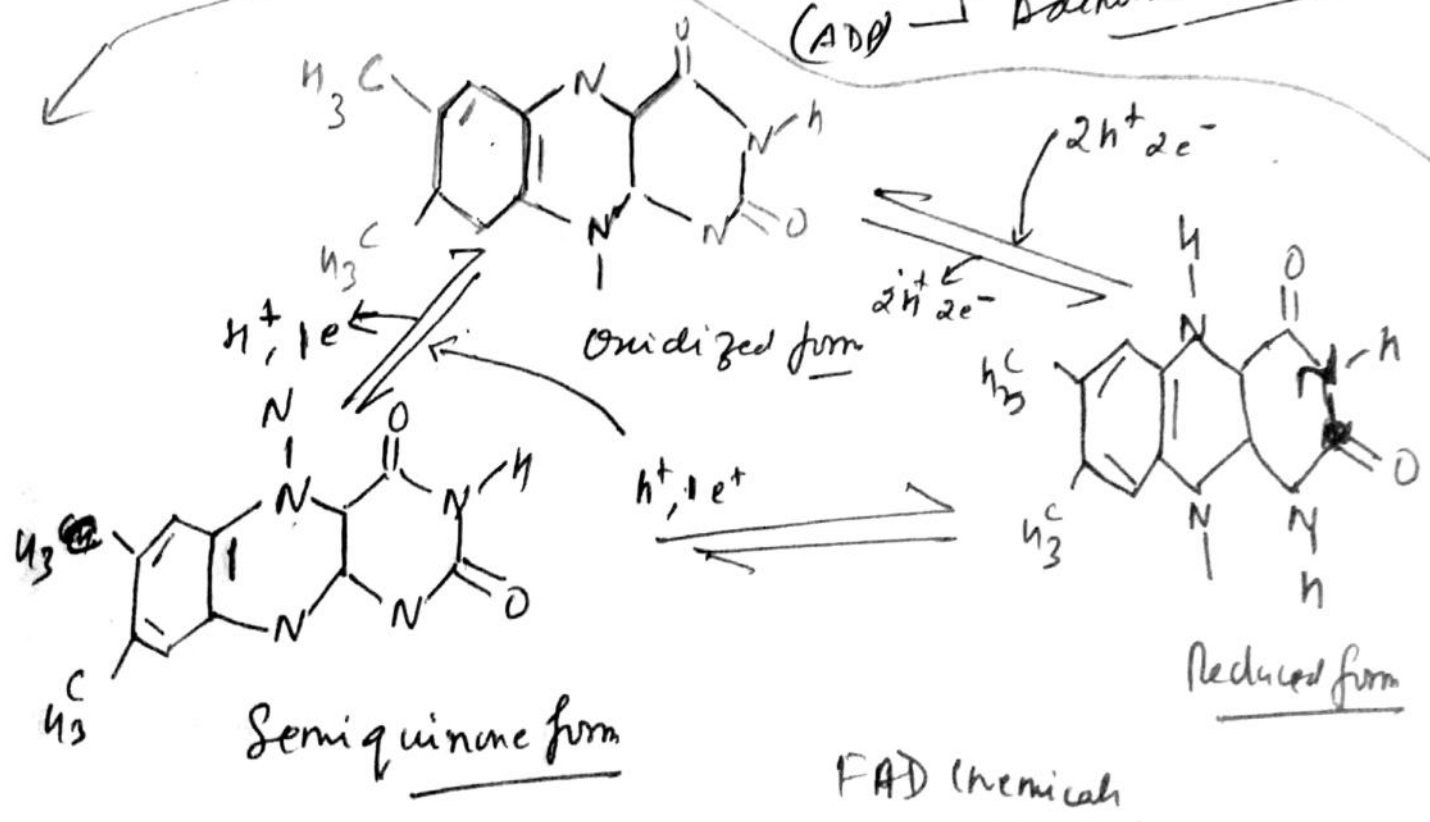
- 2nd redox-rls

• Electrons pass from one component to the next. At the end, it reduces to molecular oxygen to produce water (3)

• A complex composed of protein (psal - (1-4)) responsible for BTS. Produces - protein gradient across a membrane.



(ADP) \uparrow Adenosine Diphosphate



Next Day - Study on 4 complexes of protein

R.V. 15/11/2020