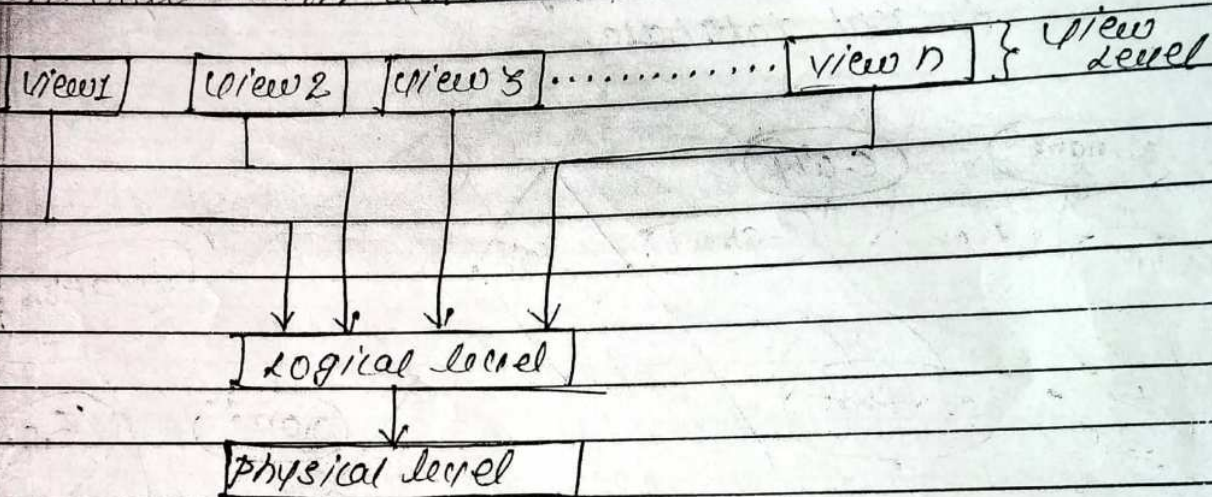


③ View Level:-

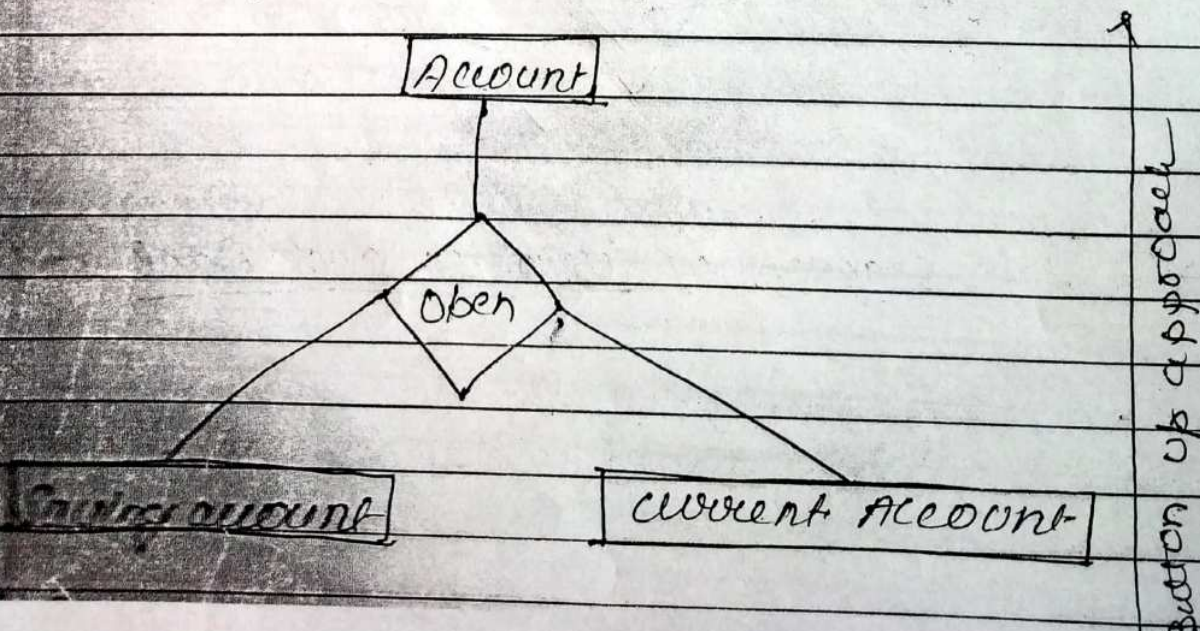
This is the highest level of data abstraction. This level describes how the users interact with database.



→ Fig: "Three levels of data abstraction" →

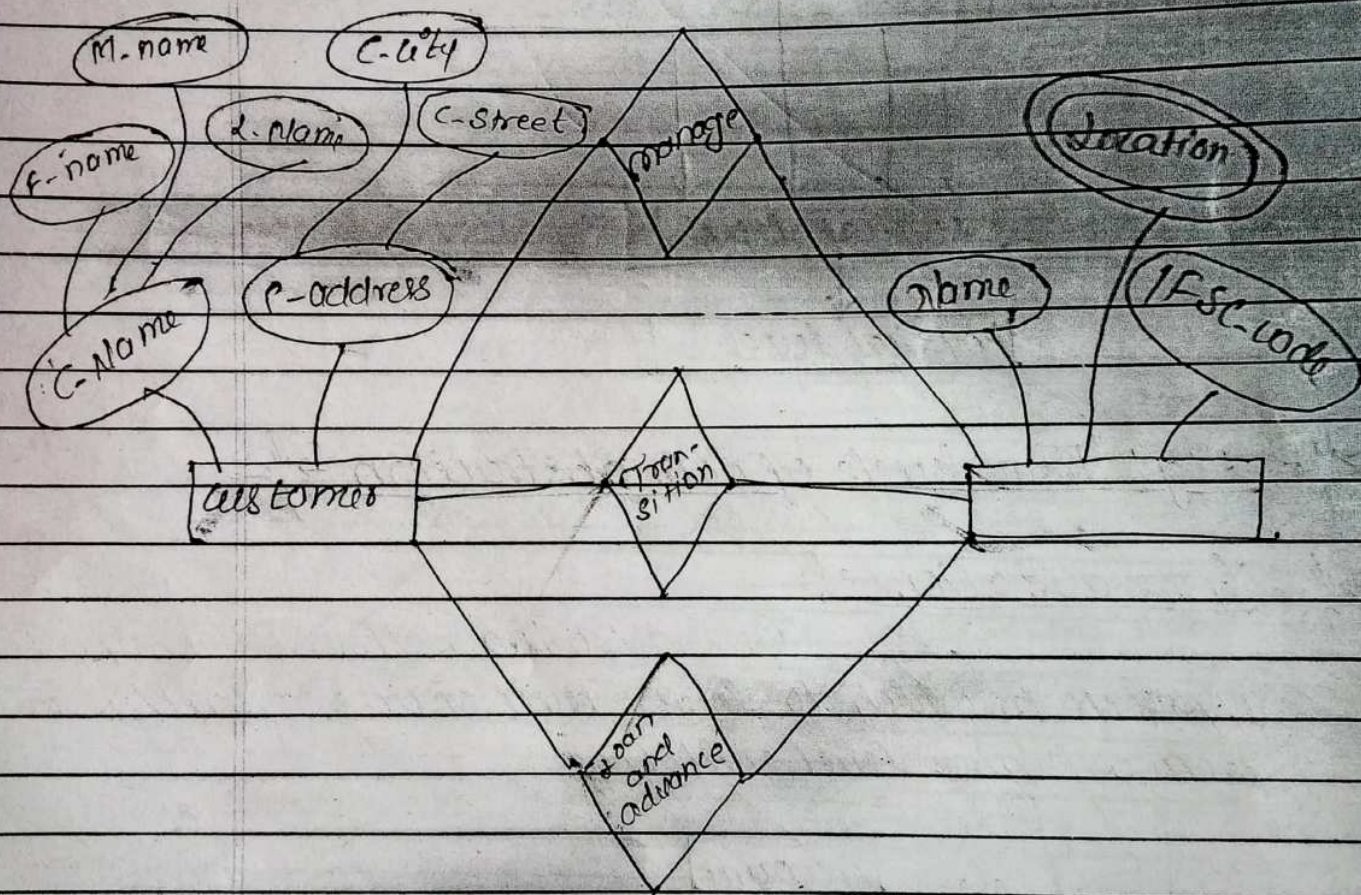
→ Generalization →

Generalization is the bottom up approach in which the lower level entities combine to form a higher level entity.



Question → Draw a ER-Diagram of a Bank. The entities are customer & Bank.

Question → Draw an ER-Diagram of university and student database.



→ "ER Diagram of Customer and Bank" →

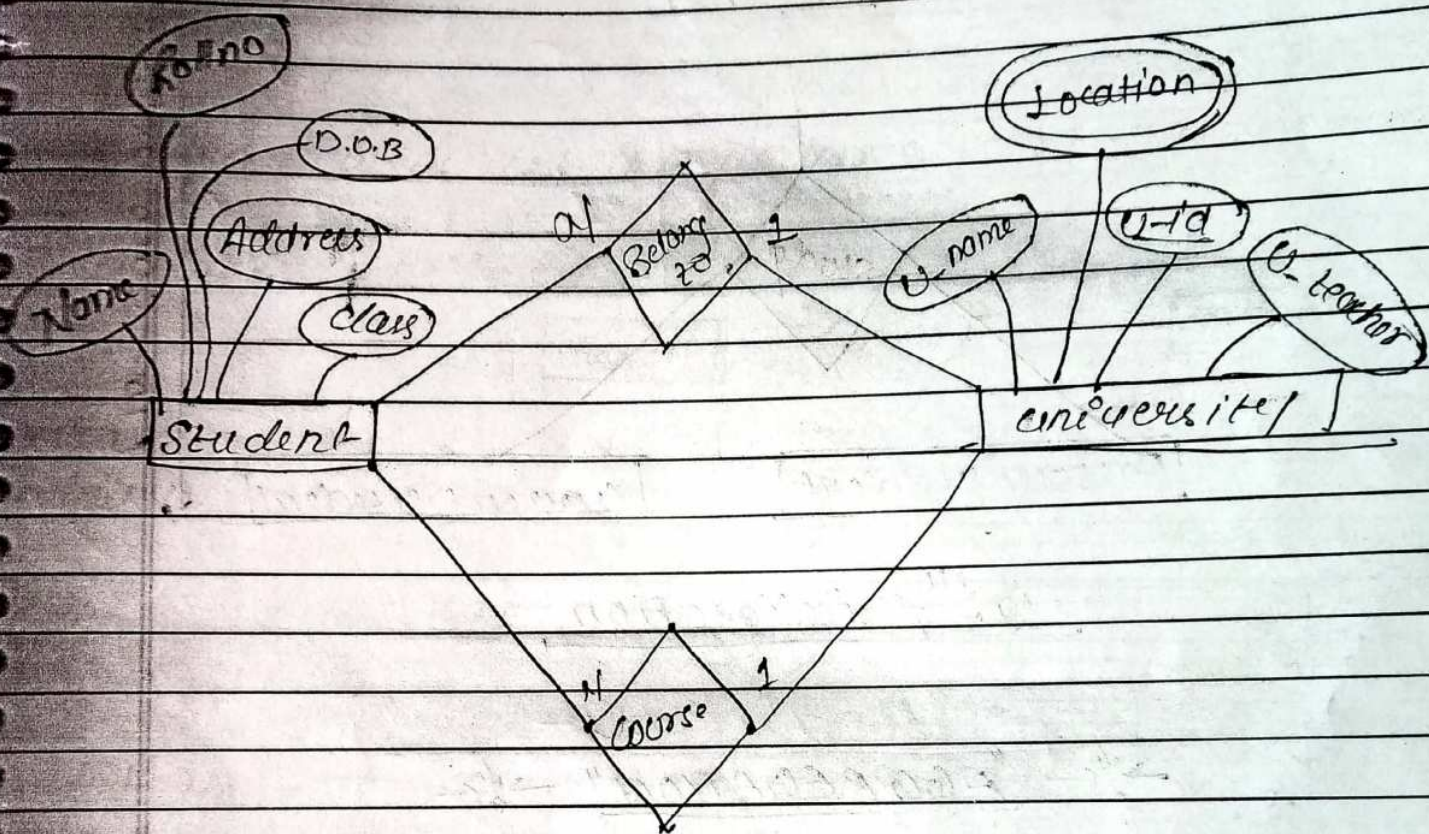


Figure: "E-R Diagram of University and Student"

* Specialization *

Specialization is opposite of generalization. It follows top down approach in which one higher level entity can be broken down into two lower level entities. In particular case of specialization, some higher level entities may not have lower level entities set at all.

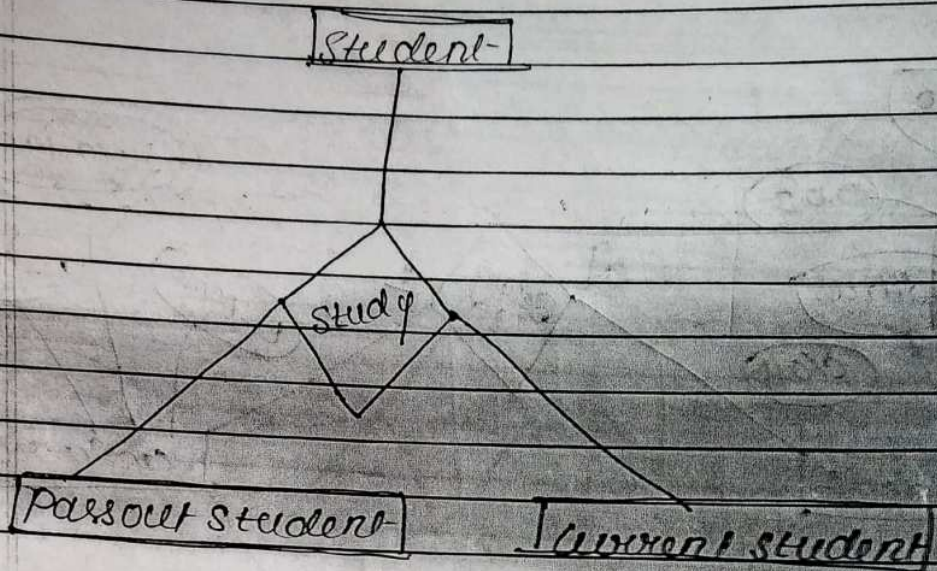


Fig: "Specialization"

→ "AGGREGATION" →

Aggregation is a process in which relationship b/w two entities is treated as a single entity.

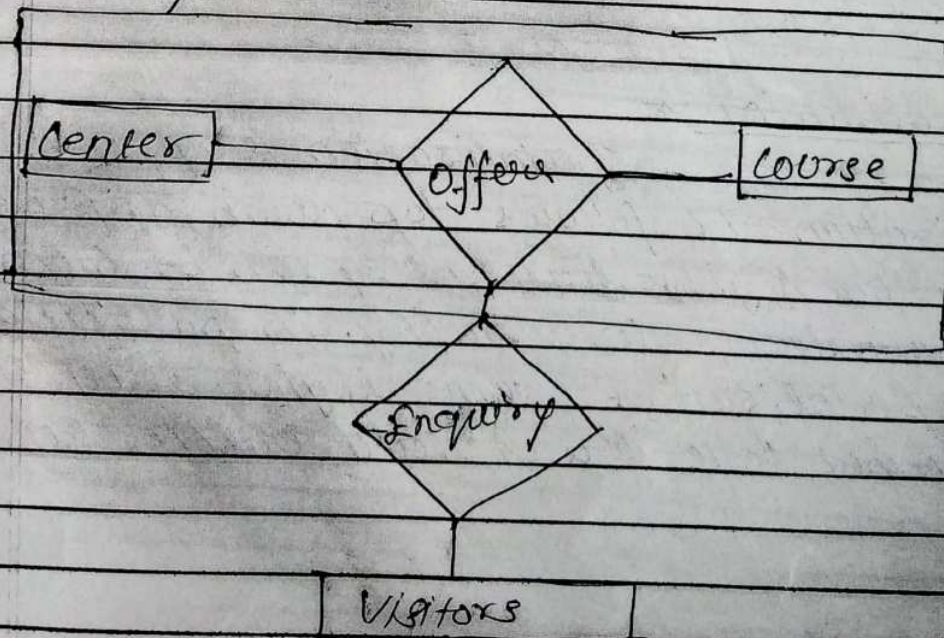


Fig: Aggregation