

Enle
9th Jun 9, 2020

Page no. :- 01

Dr. Rajesh Verma, Assistant professor and Head, U.G. Department of Zoology, D.K. College, Buxar (Bihar). Notes for B.S part 1st, paper 2 (A).

Question:- Write notes on the Parental care of fish?

Answer:- Introduction:-

Parental care, the investment in young after fertilization, may not be a behaviour that immediately jumps to your mind when you think of fishes. However, many fishes provide care for their young, and they care for the young in different ways. Which parent provides the care also varies greatly from fish species. The impressive variation in parental care tactics has made fishes an excellent group for testing our understanding of how parental care evolves. Indeed, studies with many fishes have helped shape our theoretical understanding of how sexual selection operates.

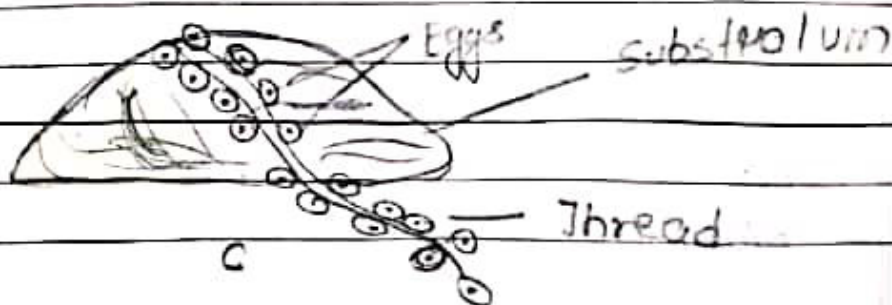
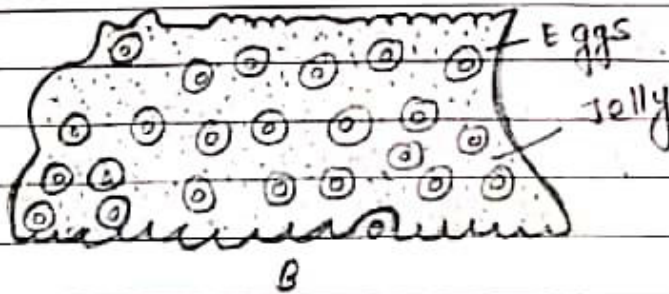
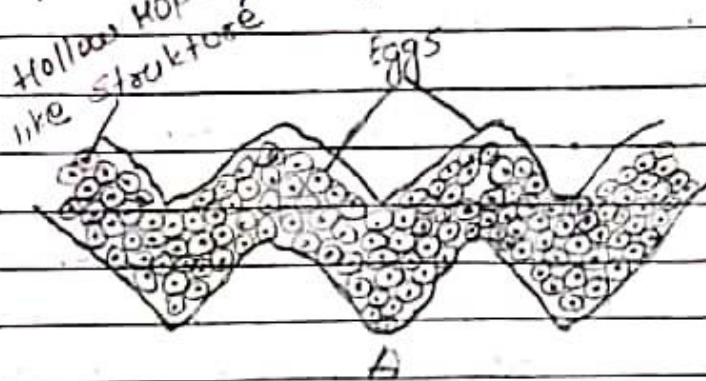
In contrast, the physiological mechanism underlying parental behavior in fishes remains poorly explored.

21/6
17th June 2020

Page no. :- 02

Date: _____
Page No: _____

Although to a limited degree prolactin, isotocin, and androgens have all been investigated in the context of parental care, the behavioral physiology of parental care in fish is very much in its infancy. In this article, we examine the major forms of care and the common patterns of care found in fishes. We then provide an explanation for three based on the cost and benefits of parental care.



Date
07.06.2020

Page no: - 03

Deposition of eggs in sticky covering:
A. Egg deposited in a net-like structure in yellow pouch. B. Eggs deposited in a gelatinous outer coat in the case of Angler fish. C. Eggs deposited on a sticky thread secreted from the kidney of flying fishes, skippers, gonfishes etc.

Parental care in Fishes

Patterns and Diversity in parental care from of care. :-

Unlike birds and mammals, whose offspring require some form of parental assistance, most fish species do not provide parental care. However, in 25% of fish species, care has evolved (care, however, in) and the way care is performed is highly variable. Fish care ranges from mere hiding of eggs and then abandoning the ones, to guarding young in elaborately prepared structures for up to several months, and from carrying young in or on the parent's body cavity to the feeding of young.

6-2520

